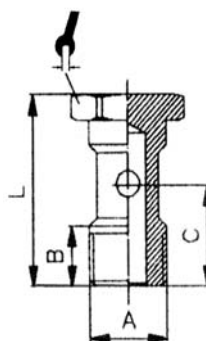


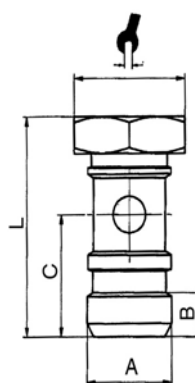
ART. 407V Vite cava semplice Banjo stem single

CODICE	A	B	C	L			
407M5	M5	5,8	9,6	17,5		8	100
40718V	G _{1/8}	9	15	28		14	100
40714V	G _{1/4}	11	18	33		17	50
40738V	G _{3/8}	12	21,5	37		22	50
40712V	G _{1/2}	14	24	42		27	25



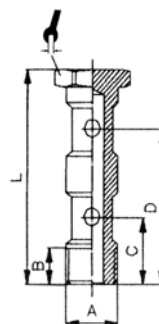
ART. 407 Vite cava semplice con O-Ring Banjo stem single with O-Ring

CODICE	A	B	C	L			
40718	G _{1/8}	4,5	13,75	25		14	100
40714	G _{1/4}	6	16,7	30		17	50
40738	G _{3/8}	6	18	34		22	25
40712	G _{1/2}	7,4	21,5	35,5		27	25



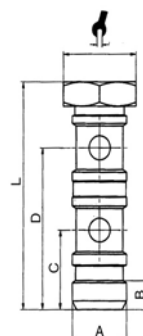
ART. 408V Vite cava doppia Banjo stem double

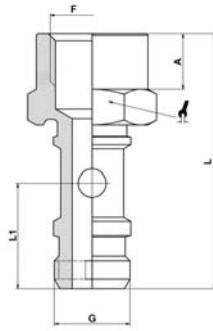
CODICE	A	B	C	D	L		
40818V	G _{1/8}	9	15	31	44,5	14	50
40814V	G _{1/4}	11	17	36	51,5	17	50
40838V	G _{3/8}	12	20,5	42	58,6	22	25
40812V	G _{1/2}	14	24	50	68	27	20





ART. 408 Vite cava doppia con O-Ring Banjo stem double with O-Ring

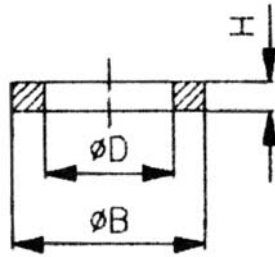
CODICE	A	B	C	D	L		
40818	G _{1/8}	4,5	13	29	40	14	50
40814	G _{1/4}	6	16,5	33,5	47	17	50
40838	G _{3/8}	8,5	18	37,6	52,5	22	25
40812	G _{1/2}	10,8	21,5	45	63	27	20






ART. 409 Vite cava semplice femmina con O-Ring
Female banjo stem single with O-Ring

CODICE	A	F	G	L	L1		
40918	7	G _{1/8}	G _{1/8}	32	13,25	14	50
40914	9,3	G _{1/4}	G _{1/4}	38	15,2	17	50

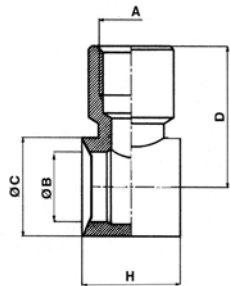


ART. 411 Rondella distanziatrice
Spacer washer


CODICE	A	B	D	H		
411PM5	M5	9	5,1	1,5		100
411P18	G _{1/8}	14	9,8	1,5		100
411P14	G _{1/4}	18	13,5	1,5		100
411P38	G _{3/8}	22	17	1,5		100
411P12	G _{1/2}	27	21,5	1,5		100
411M5	M5	8,8	5,2	1		100
41118	G _{1/8}	13,8	9,8	1,5		100
41114	G _{1/4}	18	13,2	1,5		100
41138	G _{3/8}	21	16,8	1,5		100
41112	G _{1/2}	26	20,8	1,5		100
41134	G _{3/4}	32,8	26,8	1,5		100

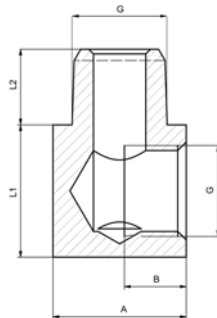
P = Versione in nylon

P = Nylon material




ART. 412 Anello singolo femmina
Female single banjo body

CODICE	A	ØB	ØC	D	H	
41218	G _{1/8}	9,9	14	20	15	50
41214	G _{1/4}	13,3	18	24	17	50
41238	G _{3/8}	16,8	21	28,5	20	25
41212	G _{1/2}	21	26	34,5	24	25

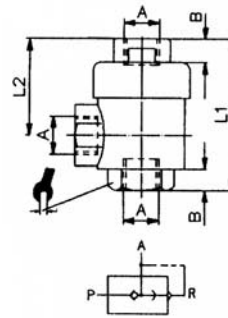


ART. RLB100 Raccordo ad "L" M/F conico
Male-female elbow tapered

CODICE	G	A	B	L1	L2	
RLB100M5	M5	9	4,5	9	4,5	100
RLB10018	G 1/8	14	6,5	14	8	100
RLB10014	G 1/4	17	9	17	9,5	100

ART. 503 Valvola scarico rapido Quick exhaust valve

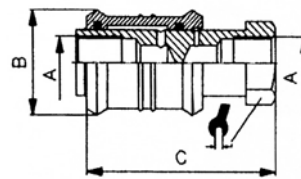
CODICE	A	B	L1	L2			
50318	G _{1/8}	8	42	28		14	25
50314	G _{1/4}	11	53,3	34,5		19	25
50312	G _{1/2}	14	71	44		26	10



ART. 504 Valvola a corsoio manuale Hand slide valve

CODICE	A	ØB	C				
* 504M5	M5	15	33			10	10
* 50418	G _{1/8}	28	53			17	10
* 50414	G _{1/4}	30	58			19	10
* 50438	G _{3/8}	35	68			22	10
* 50412	G _{1/2}	40	80			27	10
* 50434	G _{3/4}	48,0	80,0			36,0	5

* nota: corpo in alluminio
note: aluminium body



Esempi di combinazioni Examples of combinations

Asta regolatore
+ anello singolo a calzamento
Speed controller stem
+ quick single banjo body

Asta doppia girevole
+ anello doppio automatico
+ anello singolo automatico
Swivel double stem
+ push-in double banjo body
+ push-in single banjo body

Asta doppia girevole
+ 2 anello singolo a calzamento
Swivel double stem
+ 2 quick single banjo body

Asta regolatore con pomolo
+ anello singolo femmina
Speed controller stem
+ female single banjo body

Asta singola girevole
+ anello singolo ad ogiva
Swivel single stem
+ compression single banjo body

Asta singola girevole
+ anello singolo femmina
Swivel single stem
+ female single banjo body

