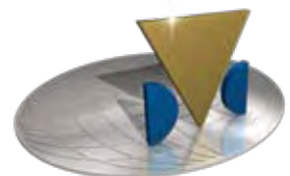


Valves with a difference



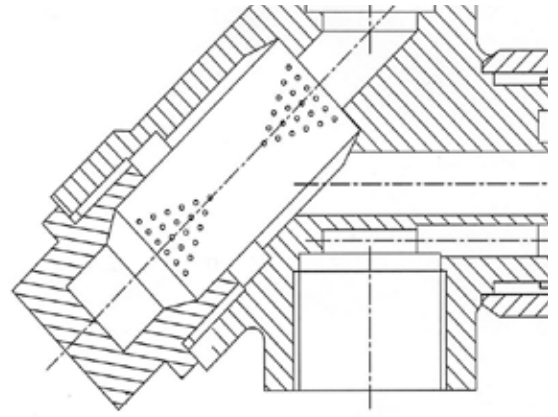
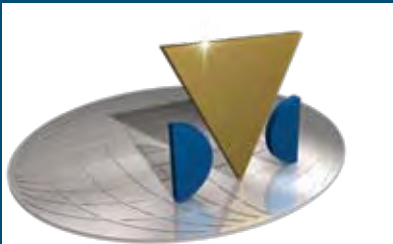
# Steam Traps



DVC INTERNATIONAL

With DVC as your business partner, you are always guaranteed a wide and well sorted product range and a unique technical know-how

Product development is a key factor for DVC, ensuring you the best products at any time



Heavy-duty  
Long Service  
High Capacity  
Large Program  
Value for Money  
Flexible Mounting  
Excellent Discharge  
Continuous Working  
Standard Dimensions  
Minimum Maintenance

What is important, when you buy Steam Traps? Heavy-duty? Long service? Value for Money? High capacity? Large program? Flexible mounting? Excellent discharge? Continuous working? Standard dimensions? Minimum maintenance?

Steam Traps from DVC are characterized by their heavy-duty construction and capacity. The Steam Traps are available in a wide range of dimensions at very competitive prices.

All these benefits that you will get with Steam Traps from DVC are your assurance for competitive products, providing you with every possibility for a prosperous business.



Ball Float Steam Trap with threaded ends / flanges  
Type 8000

Dimensions  
1/2" to 1" & 1 1/2" to 2" /  
DN15 to DN25 & DN40 to DN50

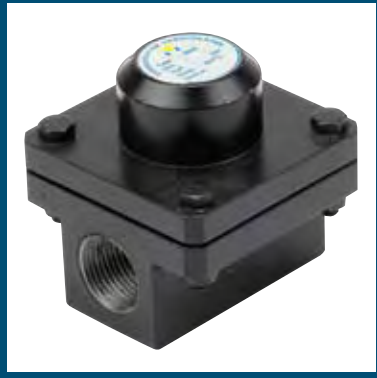


### Benefits

- Protected against water hammer  
Type 8000 has an encapsulated American patented air trap and a solid ball float.
- Flexible mounting  
Type 8000 can be mounted both horizontal and vertical, simple by flipping the cover (only threaded ends 1/2" - 1").
- High capacity  
Type 8000 has a high capacity, up to 22900 kg/h.
- Long service  
Type 8000 has a heavy pivot frame assembly and a strong spindle guide.

Thermostatic Steam Trap with threaded ends  
Type 8200

Dimensions  
1/2" to 1"



### Benefits

- Protected against water hammer  
Type 8200 has an American patented thermostat, which is counter sheathed.
- Flexible mounting  
Type 8200 can be mounted both horizontal and vertical.
- Prevents leaking and waste of steam  
Type 8200 has an internal strainer manufactured in stainless steel.
- Condensate  
Type 8200 discharges condensate at a temperature, which is approx. 20° C below the temperature of saturated steam.

Thermodynamic Steam Trap with threaded ends  
Type 8300

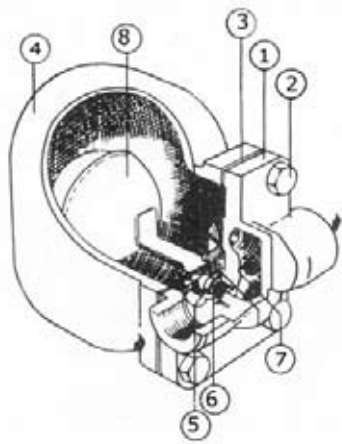
Dimensions  
1/2" to 1"



### Benefits

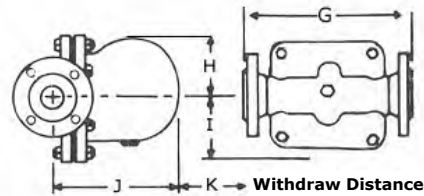
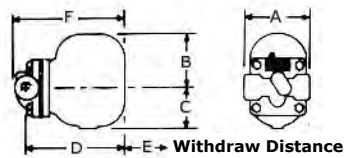
- Very robust  
Type 8300 is very robust, because it has only one working part (stainless steel).
- Corrosion-resistant  
Type 8300 is entirely manufactured in stainless steel.
- Prevents leaking and waste of steam  
Type 8300 has an internal strainer, manufactured in stainless steel.
- Pressure up to 32 bar  
Type 8300 can operate with pressures up to 32 bar.

# Type 8000 - Ball float Steam Trap with threaded ends / flanged ends



Pos	Description	Material
1	Body	Cast Iron GG25
2	Cover fasteners	Steel
3	Gasket	CAF
4	Cover	Cast Iron GG25
5	Valve Seat	Stainless Steel AISI 410
6	Valve Seat Gasket	Stainless Steel AISI 304
7	Pivot Frame Assembly	Stainless Steel AISI 304
8	Ball Float & Lever	Stainless Steel AISI 304

Dimension [mm]



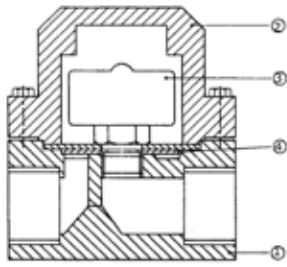
Dimensions with threaded ends [mm]								
Dimensions	A $\Delta$ p 4,5 bar	A $\Delta$ p 10 bar	B	C	D	E	F	Weight [kg]
1/2"	128	128	54	54	148	110	172	4,8
3/4"	128	128	54	54	148	110	172	4,8
1"	128	128	105	77	195	160	219	8,5
1 1/2"	280	280	127	115	244	200	275	22,5
2"	308	308	150	125	250	210	290	28,0

Dimensions with flanged ends [mm]							
Dimensions	G $\Delta$ p 4,5 bar	G $\Delta$ p 10 bar	H	I	J	K	Weight [kg]
DN 15	150	150	54	54	191	110	6,5
DN 20	150	150	54	54	191	110	7,0
DN 25	160	160	110	75	245	160	11,0
DN 40	230	230	127	110	333	200	27,0
DN 50	230	230	144	127	343	200	32,5

Capacity Chart [kg/h]

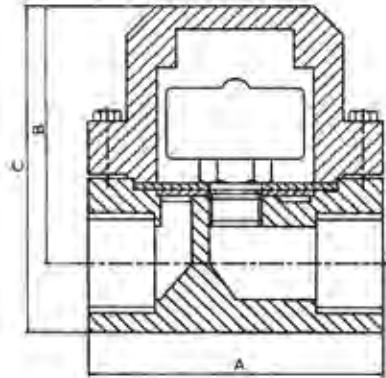
Type	Pressure [bar]	0,069	0,345	0,69	1,03	1,38	2,07	2,76	3,45	4,50	5,52	6,90	8,62	10,00	12,40	13,80
1/2" DN15	4,5	110	180	240	270	320	380	430	450	520						
	10,5	60	90	130	150	170	190	220	240	260	280	320	340	360		
	14,0	40	70	90	110	130	140	160	180	190	220	230	250	270	300	320
3/4" DN20	4,5	110	180	240	270	320	380	430	450	520						
	10,5	60	90	130	150	170	190	220	240	260	280	320	340	360		
	14,0	40	70	90	110	130	140	160	180	190	220	230	250	270	300	320
1" DN25	4,5	410	700	950	1130	1360	1650	1810	2040	2310						
	10,5	170	300	410	500	590	680	790	840	930	1020	1220	1310	1410		
	14,0	120	210	290	340	410	500	590	630	720	790	840	950	1000	1180	1250
1 1/2" DN40	4,5	140	1900	2720	3400	3990	4760	5670	6120	6800						
	10,5	680	1270	1770	2180	2540	3170	3630	4080	4540	5220	5900	6640	6800		
	14,0	500	820	1180	1450	1630	1900	2270	2470	2720	3130	3540	3900	4080	4380	4540
2" DN50	4,5	3360	6120	8980	10890	12700	15420	18140	20410	22900						
	10,5	1770	3310	4530	5580	6580	7940	9070	10200	11790	13150	14510	15800	18140		
	14,0	840	1590	2270	2680	3080	3810	4350	4760	5440	6120	6800	7480	7940	8620	9070

# Type 8200 - Thermostatic Steam Trap with threaded ends

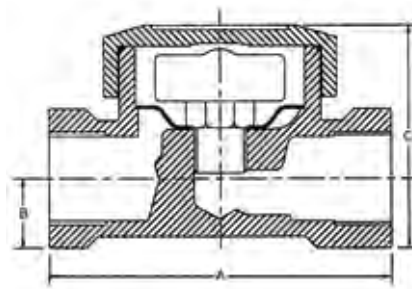


Pos	Description	Material
1	Body	Steel A105 (gun metal)
2	Cover	Steel A105 (gun metal)
3	Thermostat Element	Stainless Steel AISI 304
4	Strainer	Stainless Steel AISI 304

Dimension [mm]



Dimensions - Steel [mm]				
	A	B	C	Weight [kg]
1/2"	76,5	71,0	87,0	1,9
3/4"	76,5	71,0	87,0	1,8
1"	80,0	74,0	98,0	3,0



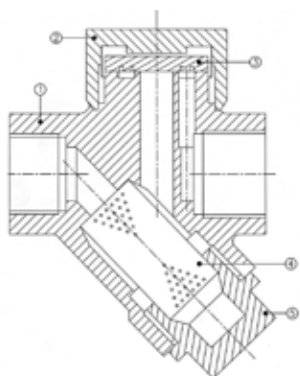
Dimensions - Gun metal [mm]				
	A	B	C	Weight [kg]
1/2"	76,0	14,0	51,0	0,65
3/4"	80,0	20,0	57,0	0,75

Capacity Chart [kg/h]

Type	Pressure * [bar]	1,38	3,45	6,90	8,62	10,34	13,79	15,52	17,24	20,69
1/2"	16/21	250	400	525	560	595	654	681	709	750
3/4"	16/21	250	400	525	560	595	654	681	709	750
1"	16/21	250	400	525	560	595	654	681	709	750

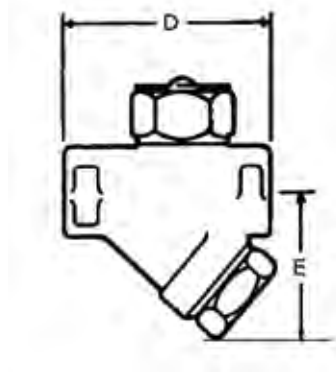
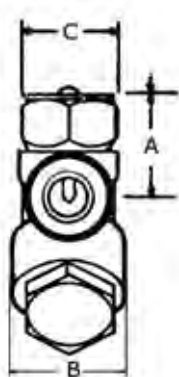
\* 16 bar for gun metal.  
21 bar for steel.

## Type 8300 - Thermodynamic Steam Trap with threaded ends



Pos	Description	Material
1	Body	Stainless Cast Steel A743
2	Cover	Stainless Cast Steel A743
3	Plate	Stainless Steel AISI 420
4	Strainer	Stainless Steel AISI 304
5	End Cover	Stainless Cast Steel A743

Dimension [mm]



Dimensions [mm]						
	A	B	C	D	E	Weight [kg]
1/2"	47,0	39,0	42,0	78,0	60,0	1,0
3/4"	47,0	39,0	42,0	78,0	60,0	1,0
1"	51,0	43,5	42,0	83,0	63,0	1,5

Capacity Chart [kg/h]

Type	Pressure * [bar]	0,69	1,38	2,07	3,45	5,17	6,90	10,34	13,79	20,69	27,59
1/2"	32	143	168	193	236	261	363	408	490	581	626
3/4"	32	295	336	363	454	499	635	699	739	798	875
1"	32	295	336	363	454	499	635	699	739	798	875

## Other products for steam

Type 3500



### Y-angle Globe Control Valves

- **Versatile**  
Type 3500 has a wide range of applications, such as breweries, textile, medical, food and chemical industries.
- **Large Program**  
Type 3500 is available as Normally Closed, Normally Open and SMS or threaded ends.
- **Maintenance Free**  
Type 3500 requires no maintenance.

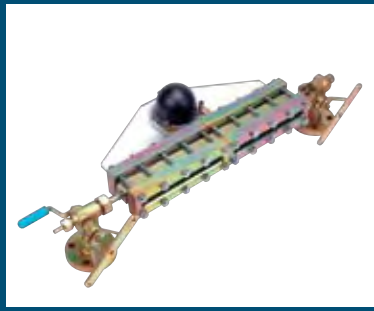
Type 3540



### Globe Valves

- **Heavy-duty**  
Type 3540/42 has a stem with back-up, which reduces the load on the gland packing, when the valve is in open position.
- **Certified**  
Type 3540/42 is continually certified by the notified bodies and comes with EN10204 certificate.
- **Long service**  
Type 3540/42 has a pin between the bonnet and bushing, which provides long service

Type 9030



### Transparent Level Gauge

- **Heavy-duty**  
Type 9030 is pressure tested at our own facilities.
- **Approved for certification**  
Type 9030 is continually certified by the notified bodies and comes with EN10204 / 3.1.B certificate.
- **Suitable for both marine and land based boilers**  
Type 9030 is suitable for steam, water, nonaggression and easy flowing liquids.

Type 6540



### Strainers

- **Flexible mounting**  
Type 6540 can be mounted in numerous positions as long as the flow is kept in the direction indicated by the arrow.
- **Maintenance**  
Discharge of deposited dirt through the bottom aperture.
- **Heavy-duty**  
Type 6540 is pressure tested at 1.5 times max. operating pressure.

# Valves with a difference

## DVC INTERNATIONAL

### Product Range

- Ball Valves
- Butterfly Valves Soft Seated
- Butterfly Valves Metal Seated
- Y-angle Globe Control Valves
- Thin Wafer Check Valves
- Pneumatic Actuators
- Electrical Actuators
- Brackets for Actuators
- Limit Switches
- Level Gauges - Reflex & Transparent

### Try us

#### - together we can make a difference

DVC is a company with a difference - our goal is not to be just another player - we want to be a leading company in the valve business.

Our distributors needs drive our business. It is our goal to build long-term partnerships with everyone of our distributors, contributing to their succes.

Accuracy, excellent service, flexibility, timely delivery and cost effectiveness all ensure that we meet end even exceed the expectations of our distributors.

Visit us at [www.dvc.nu](http://www.dvc.nu) and learn more about DVC and our products.

