

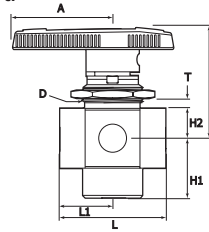
V825 Switching 5-way Ball Valves

Features

- Flow switches from a single port to multiple ports or from multiple ports to a single port.
- Spring-loaded detent ensures exact port positioning.

Technical Data with standard PTFE seat

Valve Series	Pressure Rating @ 37 °C (100 °F)		Temperature Range
	bar	psig	
V825A	172	2500	10 to 65 °C
V825B	103	1500	50 to 150 °F



Ordering Information and Table of Dimensions

Ordering Number	End Connection	Cv	Orifice		Dimensions, mm(in.)							
			mm	inch	L	L1	H1	H2	A	T*	D	H
V825A-	F2N-S	0.07	1.6	0.062	39.4	19.8	22.4	11.2	38.9	4.1	23.1	42.9
	F2G-S				(1.94)	(0.78)	(0.88)	(0.44)	(1.53)	(5/32)	(29/32)	(1.69)
V825B-	F8N-S	3.5	10.3	0.406	79.5 (3.13)	39.6 (1.56)	39.6 (1.56)	17.5 (0.69)	76.2 (3.00)	9.7 (3/8)	38.1 (1 1/2)	61.7 (2.43)

T* indicates the maximum panel thickness. 3.2 mm (1/8 in.) minimum panel thickness.
 D : Panel hole

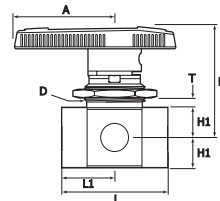
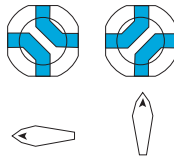
V824 Crossover 4-way Ball Valves

Features

- Crossover of two streams
- Mechanical stop ensures positive port positioning

Technical Data with standard PTFE seat

Valve Series	Pressure Rating @ 37 °C (100 °F)		Temperature Range
	bar	psig	
V824A	172	2500	10 to 65 °C
V824B	103	1500	50 to 150 °F



Ordering Information and Table of Dimensions

Ordering Number	End Connection	Cv	Orifice		Dimensions, mm(in.)							
			mm	inch	L	L1	H1	A	T*	D	H	
V824A-	F2N-S	0.08	1.6	0.062	39.4 (1.55)	19.8 (0.78)	11.2 (0.44)	38.9 (1.53)	4.8 (3/16)	23.1 (29/32)	42.7 (1.68)	
V824B-	F8N-S	1.6	7.1	0.281	79.5 (3.13)	39.6 (1.56)	17.5 (0.69)	76.2 (3.00)	9.7 (3/8)	38.1 (1 1/2)	61.7 (2.43)	

T* indicates maximum panel thickness
 D : Panel Hole

Handle Options

Aluminum Bar
 Add-AH to the valve ordering number.
 Example: V824A-F-2N-AH-S



Stainless Bar
 Add-BH to the valve ordering number.
 Example: V824A-F-2N-BH-S

How to Order

Select applicable valve pattern, options and body material from designators listed below.

V824A-F2N

V82B-D4T **-A**

-NL

-AH

-B





-S

2-way	Top mounting	Valve with no lubricant	Bar handle	Body material
• A: 2-way angle pattern	• TM: top mounting Note: Top mounting option is applicable only to the in-line pattern 2-way valves.	• NL: No lubricant Valve Note: Valve with no lubricant is factory tested at 200 psig (13 bar). This valve has a pressure rating of 200 psig (13 bar).	• Nil: Standard Nylon handle • AH: Aluminum bar handle • BH: Stainless bar handle	• S: SS316 • B: Brass

Safe Valve Selection

The selection of a valve for any application or system design must be considered to ensure safe performance.

Valve function, valve rating, material compatibility, proper installation, operation and maintenance remain the sole responsibility of the system designer and the user. Dk Tech accepts no liability for any improper selection, installation, operation or maintenance.

 <p>THE POWER OF RELIABILITY DK TECH CORPORATION www.dklok.com</p>	DK TECH Trademarks   		DK TECH contact information Tel. (82) 55-338-0114 Fax (82) 55-338-6745 E-mail: sales@dklok.com	For International customers Tel. (82) 55-338-0031/2 Fax (82) 55-338-6746 E-mail: dklok@dklok.com
	Mailing Address 826, Naesam-Ri, Juchon-Myeon, Gimhae-City, Gyeong Nam, Korea 621-841			